

The image shows the interior of a classic convertible car, likely a 1950s model, with a black exterior and a tan interior. The steering wheel is a large, light-colored, three-spoke design with a chrome center. The dashboard features several round gauges and a vintage radio with a cassette slot. The car is set against a background of a starry night sky with soft, glowing clouds. The overall mood is nostalgic and aspirational.

EMERGE [1] Verse

# Dream Car

by Linda Oatman High




# Dream Car

by Linda Oatman High

It is night.  
Marley *wishes*  
on a star.





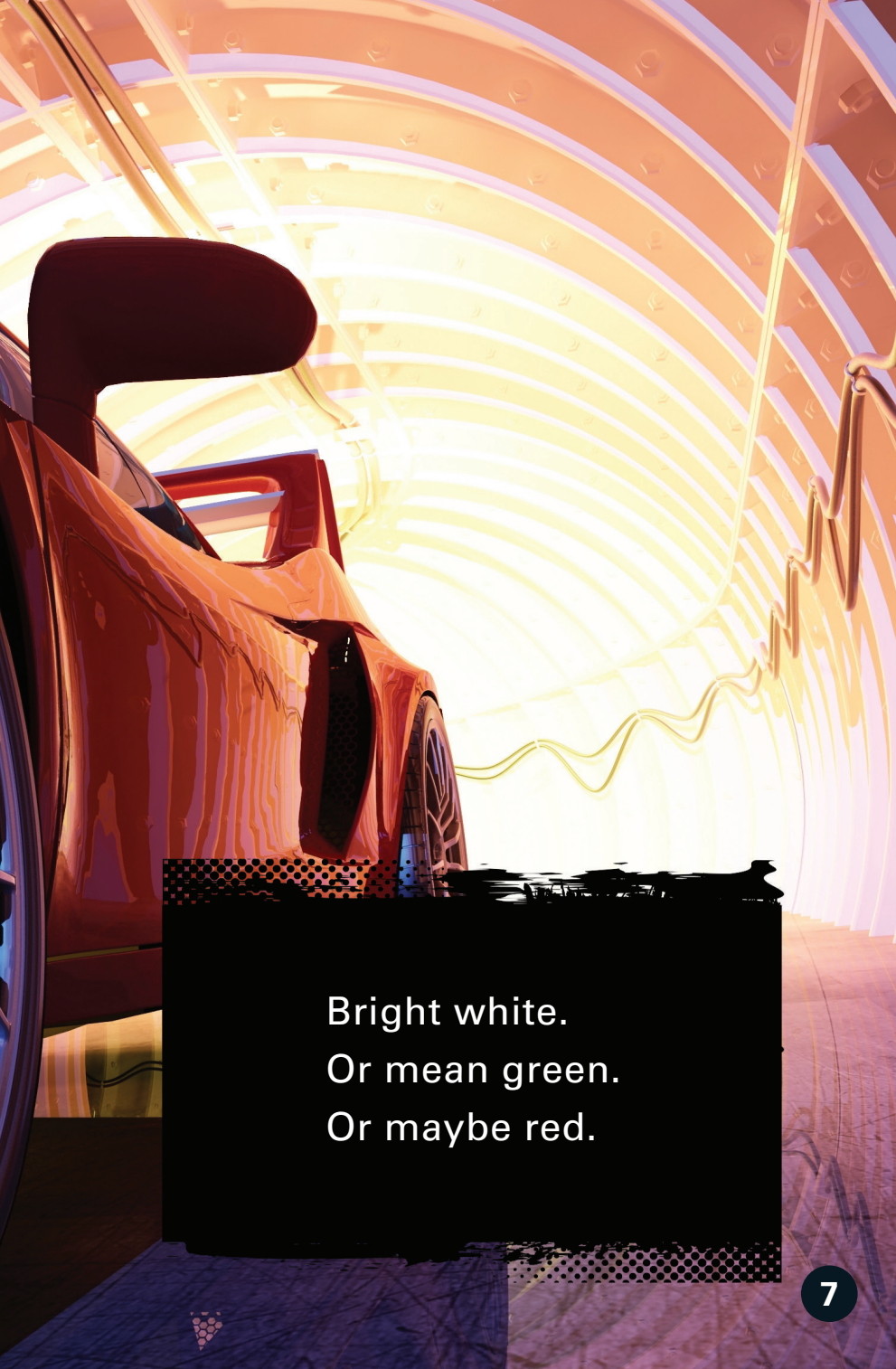
He wants  
a car.

His *dream car.*





A *sports car.*



Bright white.  
Or mean green.  
Or maybe red.

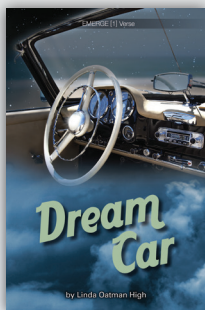
TEEN EMERGENT READER LIBRARIES®

# BOOSTERS

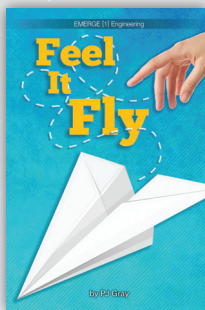
The Literacy Revolution Continues with  
New TERL Booster Titles!

Each Sold Individually

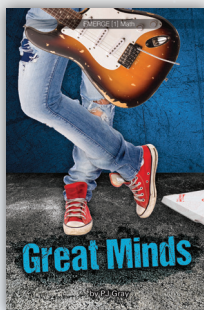
## EMERGE [1]



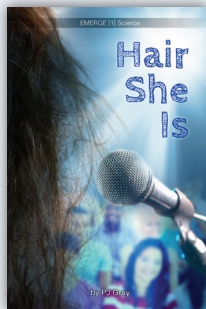
9781680211542



9781680211139



9781680211528



9781680211153



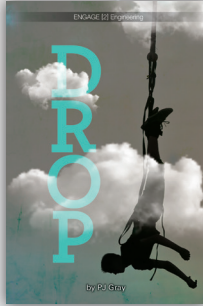
9781680211122



## ENGAGE [2]



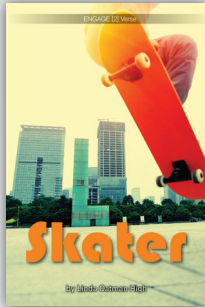
9781680211146



9781680211337



9781680211290

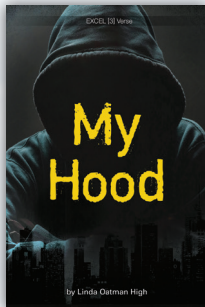


9781680211535

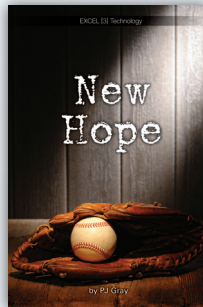


9781680211313

## EXCEL [3]



9781680211306



9781680211320

NEW TITLES COMING SOON!  
[www.jointheliteracyrevolution.com](http://www.jointheliteracyrevolution.com)